



DOX3D

DOX3D

NEW YORK TOKYO SEOUL

3D COMPUTER GRAPHICS

WWW.DOX3D.COM ip@DOX3D.COM +(81) 70 4079 5623





OUR CG TEAM

Ivan Pazos, AIA PhD

Gorka Blas, MA

Berta Alguero, ID

Yurii Korzhan, CG

Jennifer Cho, LEED IIDA

IVAN PAZOS PhD AIA

Architect and Interior Designer based in New York and Tokyo. Mr. Pazos has a Master in Architecture by Columbia University in New York and a PhD in Computer Science by A Coruña University in Spain. He holds Architecture Professional Licenses in New York and in Spain. He has lectured and participated in final critics at international academic institutions and his work and research work has been widely published.

Prior to establishing his own firm, he was Architecture Professor at Korea and Hayang Universities in Seoul. He gained Professional experience working with Peter Eisenman and Skidmore Owings and Merrill (SOM), both in New York, and Nihon Sekkei in Tokyo, and currently he is the Founder of DOX.



PUBLICATIONS & PRESS

Interior Design Magazine

Dezeen

ArchDaily

Monacelli Press

El Pais

Elle Decor US, KR & JP

Pasajes

Hospitality Design

Mu tboard&Vogel

The Japan Times

Journal of the CTBUH

Journal of Urban Planning and Dev.

IT Software Journal

Journal of Asian Architecture (JAABE)

Kyodo News

De Ingenieur

Eureka.Alert

Qwerty Radio

European Development Bank

SIC

PROJECTS & CLIENTS

ANA

YouTube

Perrier-Jouet

Sazaby-League

Agatha Paris

Amway

Adeam

Foxey

Anayi

Alta Architecture

Nihon Sekkei

SOM

Joe Ginsberg

SK-II

Dentsu

HP

Accor Group

W Hotels

BBVA

Lee Bo Young

Passtaccio

Blue Velvet Club

ENC restaurants

Cow's

Qatar Petroleum

Pritzker-Hyatt

JTI

DA Group

Marmara Hotels

Sokyo Gallery

Park Hotels

KCC

Silverstein Prop.

NATO

DIFFA

Bee House

Deloitte

JLL

Keio Almazan-LAB

HaCo





www.DOX3D.com
ip@DOX3D.com
+(81) 70 4079 5623

COMPANY PROFILE

Interior and Architectural 3D Computer Graphics

Computer Graphics firm based in Tokyo, New York and Seoul. The company specializes in Interior and Architecture 3D renderings and animations. Our philosophy and goals are to always ensure the highest standard of service for our clients, by providing professional and custom services for each project, through rigorous analysis of our clients' needs. Our work engages the latest and more cutting edge 3D technologies.

DOX



DOX 3D

NEW YORK TOKYO SEOUL
COMPUTER GRAPHICS



3D METHODOLOGY

Our work focuses on the development of the Design in 3D, from the concept to the end of the project. We prioritize innovation and efficiency, by using the latest computer and 3D technologies in our design process, producing realistic 3D Computer Graphics to provide our clients with a very accurate idea of the design. Our FEES are affordable, and the results astonishing, to the point that often is hard to distinguish between our 3D renderings, and the final built projects months later.

SERVICES & FEES

Our FEES are affordable and competitive. Fees and schedules are based on the complexity of the project, type of images, and total number of 3D cuts. Please contact us anytime, for FREE inquiries and quotes.



SERVICE ORIENTED



FLUENT COMMUNICATION



3D TECHNOLOGIES



CONSTANT INNOVATION



PROJECT MAP



CLIENTS

FOX EY

SK-II

TATCHA

ANA
All Nippon Airways

ADEAM

UPI

CHAMPAGNE
PERRIER JOUËT

ANA Hangar bay Cafe
by PARLO

デコサ-フ

CBRE

Mucci's

YouTube

SETAN

Deloitte.

The SAZABY LEAGUE

hp

PARADISE

ADIENT

THE MARMARA

b

MEJURI

Amway

AGATHA
PARIS

GSIX
GINZA SIX

マルハチ

TOKYO

ADEAM GINZA SIX TOKYO

Ginza, Tokyo, Japan 2016. DOX3D/ Design by HaCo

Flagship store in Tokyo for ADEAM, following the steps of the Midtown location. The Design was created by HaCo, DOX was responsible for the 3D work. The design is simple, elegant, with references to Japanese traditional architecture.



FOXLEY POP-UP TOKYO

Shinjuku, Tokyo, Japan 2019. DOX3D / Design for HaCo

Foxey's Sports Pop-up store in Isetan Shinjuku. Designed by HaCo, the 3D design was done by DOX. The store showcases the new casual collection of the Japanese high end fashion Brand Foxey.



ADIENT SHOWROOM YOKOHAMA

Kanagawa, Japan 2023. DOX3D / Design by DOX

Showroom, Cafe, and Meeting Spaces for GLOBAL leading automobile seat manufacture ADIENT. The space has a futuristic look but still natural and sustainable, a bright future for a leading company.





YOUTUBE TOKYO

Tokyo, Japan 2017. DOX3D/ Design by DOX

Proposal for the new YouTube Space in Tokyo. The design was the second place in a restricted design competition, among some of the most recognized designers in Japan. The concept was to use the YouTube design identity as motive for the facade and interiors. The building becomes a huge billboard freestanding in the bustling Shibuya district.



SK-II POPUP TOKYO

Omotesando, Tokyo, Japan 2018
DOX3D / Design by ALTA NYC & HUGE

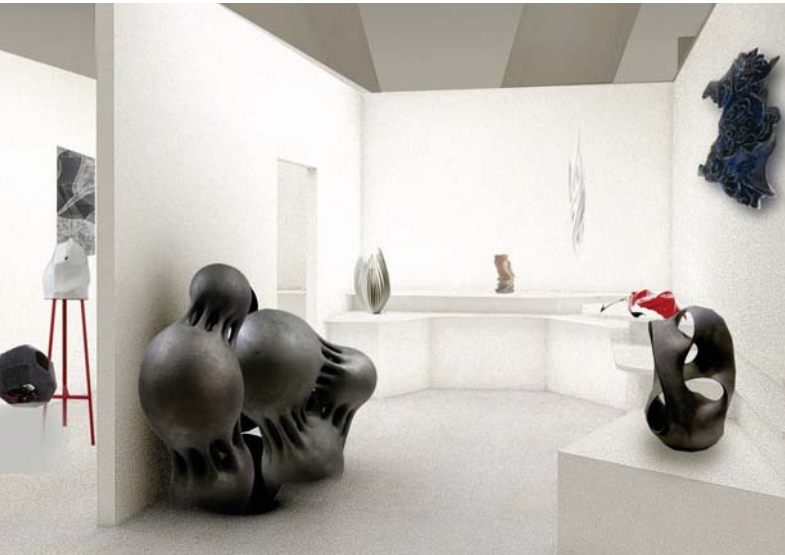
Collaboration with ALTA architecture and HUGE NY, for the design of a Pop-up Store, for the cosmetics brand SK-II in the trendy Omote-Sando neighbourhood, Tokyo. DOX was in charge of the 3D renderings.



KUMUKUM ART GALLERY NYC

Lower East Side, NYC, USA 2009. DOX3D / Design by DOX

KumuKumu, located in Manhattan's Lower East Side, center of the upcoming New York art scene. The art gallery is a very long space, the concept was to divide it into three continuous chambers gradually shrinking, making the experience of walking through the Art Gallery a journey full of discoveries.



ART FAIR TOKYO 2018

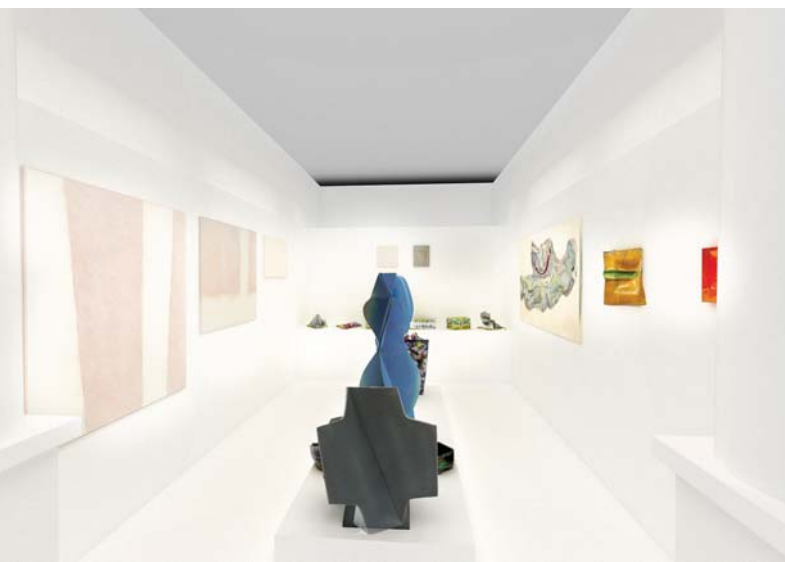
Tokyo, Japan 2018. DOX3D / Design by DOX

Sokyo's Gallery Booth for the 2018 Tokyo's International Art Fair (AFT). The design features a continuous two level undulating counter to showcase the contemporary ceramic artworks.

ART BASEL BASEL 2017

Tokyo, Japan 2018. DOX3D / Design by DOX

Sokyo's Gallery Booth for the 2017 Art Basel Fair in Switzerland.



JINART BEIJING 2018

Tokyo, Japan 2018. By DOX

Sokyo's Gallery Booth for the 2018 Beijing's Art Fair.

TATCHA

SEOUL

Seoul, Korea 2022. DOX3D / Design by ALTA NYC

Located in Lotte Department Store, it was designed by ALTA NYC. DOX collaborated with the design of the fixtures and the 3D renderings.



CANAL LOUNGE

TOKYO

Shibaura, Minato-Ku, Tokyo, Japan 2021
DOX3D / Design by DOX & Almazan Keio Lab

Lounge on a high rise residential tower in overlooking Tokyo Bay. The design was made by Almazan Lab and DOX, 3D renderings by DOX3D.



UPI STORE

TOKYO

Omote-Sando, Tokyo, Japan 2021
DOX3D / Design by HaCo

UPI Outdoors store in Omote-Sando designed by HaCo, with the collaboration of DOX for the 3D design. The store is an extension of nature in the heart of Tokyo.



UPI STORE

KYOTO

Osaka Japan 2022
DOX3D / Design by HaCo

UPI Outdoors store in Osaka designed by HaCo, with the collaboration of DOX for the 3D design. The store is an extension of nature in the heart of Kyoto.



MB BANK HA NOI

Ha Noi, Vietnam 2017. DOX3D
Ivan Pazos as Senior Designer for Nihon Sekkei

MB Bank Headquarters, Ivan Pazos was senior interior designer for the Nihon Sekkei team. The executive offices are located at the top floor, and wood is the predominant material.



CBRE OFFICE READY TOKYO

Tokyo Japan 2022
DOX3D / Design by CBRE

Office Design made by the CBRE interior design department.
3D Renderings by DOX3D.



ADEAM+FOXLEY TOKYO

Tokyo, Japan 2019. DOX3D / Design by HaCo

Fashion store in Isetan Shinjuku, combining the ADEAM and FOXLEY brands in one space. DOX developed the 3D design for HaCo. The project is simple, luxurious and elegant. The 3D design images and final construction are almost identical.



SK-II TESTER BAR TOKYO

Omotesando, Tokyo, Japan 2019
DOX3D / Design by DENTSU LIVE

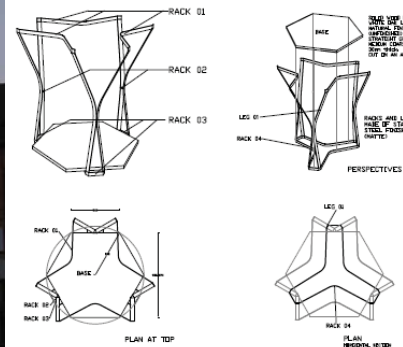
Collaboration with Japanese top advertising firm Dentsu Live, for the design of a Pop-up Store for the cosmetics brand SK-II in Omote-Sando, Tokyo. The design featured a tester bar and powder room, and it was inspired by the Power of Pitera commercial series, starring Japanese celebrity Naomi.



BEE HOUSE SEOUL

Hongdae, Seoul, Korea 2011. DOX3D / Design by DOX

Hongdae is the hip party area for Seoul's youngsters. We were commissioned the design a casual retail space, by using unfinished materials, the result is a warehouse looking space filled with hexagonal furniture elements based on Bee House's logo and brand identity. The curves and angles add sophistication to the design, acting as an attractor for customers.



ANAYI TOKYO

Tokyo, Japan 2017. DOX3D / Design by HaCo

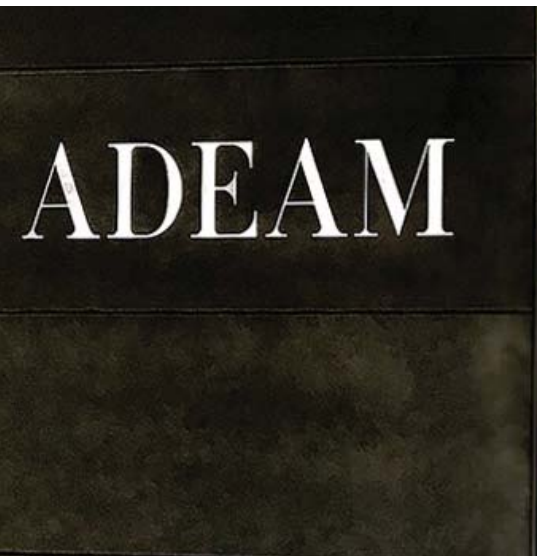
Proposal for new fashion store for Japanese fashion brand ANAYI. Perfect proposal by HaCo, and 3D renderings by DOX. The design is simple, elegant. The main concept was a continuous illuminated wall niche.



ADEAM GINZA SIX TOKYO

Ginza, Tokyo, Japan 2016
DOX3D / Design by HaCo

Flagship store in Tokyo for ADEAM, following the steps of the Midtown location. The Design was created by HaCo, DOX was responsible for the 3D work. The design is simple, elegant, with references to Japanese traditional architecture.



AMWAY SEOUL

Seoul, Korea 2016. DOX3D / Design by DOX

Restricted design competition by invitation for Amway Asia. The concept proposal was for Amway's APAC operations new showrooms. The design features natural elements and wood screens.



TOMAHAWK & CHAMPAGNE LONDON

London, UK 2015. DOX3D / Design by DOX

Tomahawk & Champagne Steakhouse features champagne golds and greens, on this exclusive venue in the center of London.

Designed for Giuseppe Mucci.

A safe Heaven for the dangerously trendy.



PERRIER JOUET SEOUL

Paradise City Casino and Hotel, Seoul, Korea 2015
DOX3D / Design by DOX

Trendy venue at Incheon's Airport Paradise City Casino. High end Bar for top world class Champagne brand Perrier-Jouet, catering a feminine and sophisticated clientele. The design is a mixture of greens and golds. Collaboration of DOX and Pernord Richard Korea.



ANA HANGAR CAFE

HANEDA AIRPORT

Haneda International Airport, Tokyo 2019
DOX3D / Design by Sazabi-League

All Nippon Airlines (ANA) hangar cafe, at Haneda House, on Domestic Terminal 2. The cafe is a collaboration of Pablo's Cheesecakes and ANA, designed by Sazabi-League, DOX collaborated with the 3D design production.



COWY'S

SEOUL

Seoul, Korea 2013. DOX 3D / Design by DOX

CowY's is a proposal for a honey comb ice cream franchise in Seoul. The client asked for a retro-European chick look, with traditional materials to be used in a very modern way. Clean, simple and elegant soft ice cream shop.



BAR DE PINTXOS TOKYO

Tokyo, Japan, 2015. DOX3D / Design by DOX

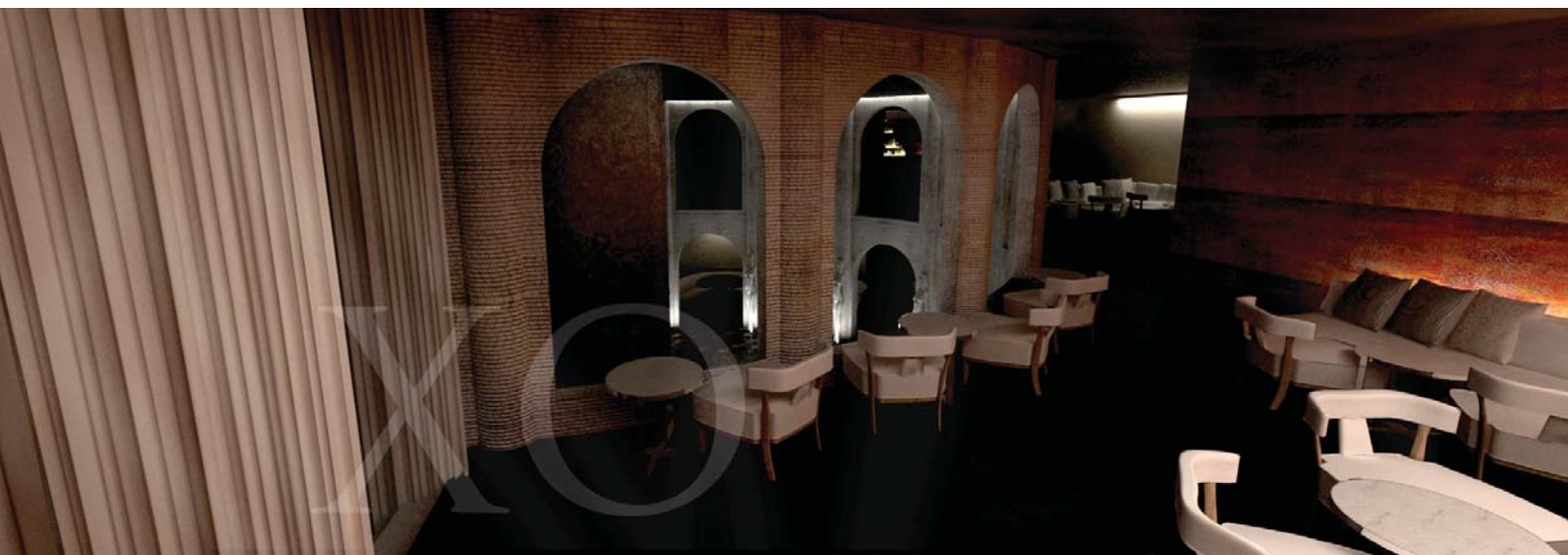
Proposal for a Spanish Bar franchise in Tokyo. The venue is coffee and wine oriented, with pintxos or small tapas to eat. The mood is more set for daytime, very modern and contemporary but incorporating some traditional elements to enhance the traditions and history of the foods and drinks served.



XO CLUB SEOUL

Itaewon, Seoul, Korea 2013. DOX3D / Design by DOX

DOX was responsible for the design of the XO Club, located in the epicenter of Itaewon. XO Club targets a trendy and sophisticated crowd of partygoers. The Club features a Colosseo-like amphitheater, that serves as a stage and dance floor. The design is lavish and inspired in Kubrick's Masterpiece "Eyes Wide Shut".



BAR DE COPAS TOKYO

Roppongi, Tokyo, Japan 2015. DOX3D / Design by DOX

Spain style Bar de Copas, for casual evening wine and pintxos, and late night indulging. The Iberian drinking and eating culture gets transplanted to Tokyo in a very contemporary way, avoiding traditional stereotypes of Spanish culture, aiming to reshape Tokyo's nightlife.



DAJE PINSA LONDON

Covent Garden, London, UK 2019. DOX3D / Design by DOX

Italian fine eatery in London's Covent Garden district. The venue design was done in close collaboration with Baldoria's Giuseppe Mucci. The restaurant is proposal of a renovation of a previous existing venue.

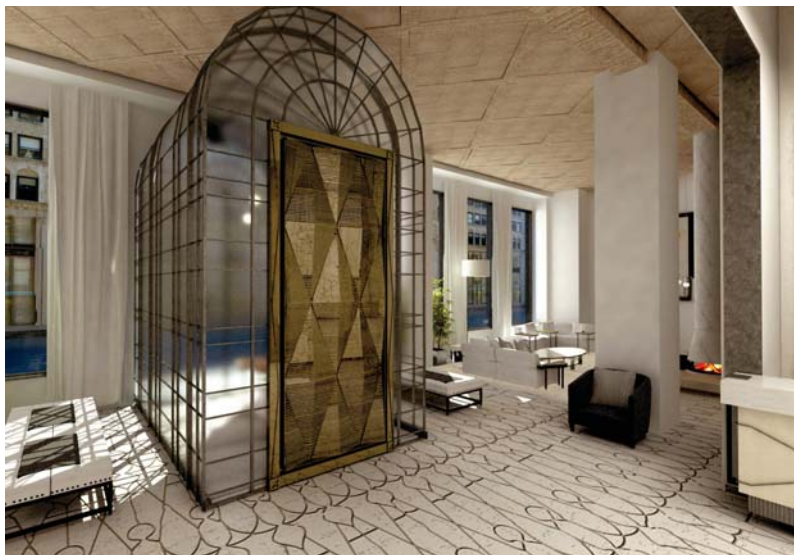


MARMARA PARK AVENUE HOTEL

NEW YORK CITY

Manhattan, NYC, USA 2013
DOX3D / Design by DOX & Joe Ginsberg

The Marmara Hotels property in Park Avenue South, just a few blocks from Grand Central Station. The Hotel targets a sophisticated crowd of Global Nomads. The design is a Collaboration between New York artist Joe Ginsberg and DOX. Art pieces, finishes and applications create an unique space, with its own character and personality.



MERCURE HOTEL

HANOI

Ha Noi, Vietnam 2011. DOX3D
Design by Ivan Pazos for DA Group

The lakes and trees of Ha Noi, the traditional and charming Vietnamese attires and hats have been the main inspirational motive for the design of the new Mercure property in the City. The peach flowers also bring a pinch of colour into the mix. Ivan Pazos was the lead designer within the DA group team.

QYU NHON HOTEL

VIETNAM

Qyu Nhon, Vietnam 2017. DOX3D
Design by Ivan Pazos for Nihon Sekkei

Hotel development on the beach front of Qyu Nhon. Ivan Pazos was the lead designer within the Nihon Sekkei team. The hotel is a mid range facility in the town of Qyu Nhon, upcoming new resort.



BAILEY HOUSE WEDDING HALL SEOUL

Gangnam, Seoul, Korea 2019
DOX3D / Design by DOX & WEE Associates

Wedding hall facilities for Bailey House, within a Shilla Stay Hotel in Seoul's Gangnam District. The design included food & beverage and the wedding chapel. The project was a collaboration with Seoul's based firm Wee Associates.



W HOTEL ORANGE COUNTY

Orange County, CA, USA 2008. DOX3D
Design by Ivan Pazos for SOM

Huntington beach is a surfing spot in the LA Area. The project was designed by SOM, and Ivan Pazos was the lead interior designer. Purples, reds, and oranges are mixed together with wave like wood structures. A safe Heaven for the dangerously trendy.



QATAR PETROLEUM QATAR

Doha, Qatar 2009. DOX3D
Design by Ivan Pazos for SOM

Qatar Petroleum Headquarters, by SOM. Ivan Pazos was the main senior interior designer for the SOM's team. The project comprises 15 buildings with offices and facilities. Each building has a predominant punch color.



NATO HQ BRUSSELS

Brussels, Belgium 2004-2017. DOX3D
Design by Ivan Pazos for SOM

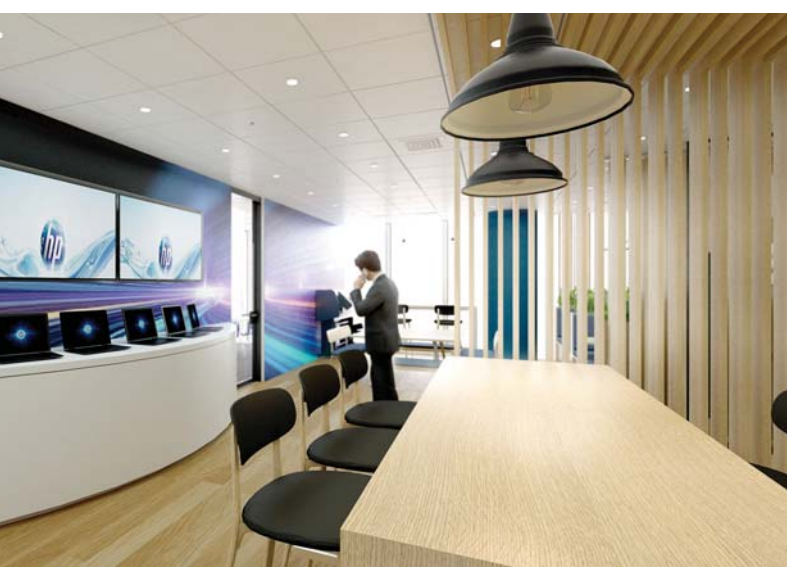
NATO Headquarters building in Brussels, designer by SOM Chicago, New York, and London. Ivan Pazos was Senior Designer with SOM for the Council Room, Meeting, and public areas. The building started its operations in 2017.



HEWLETT PACKARD OSAKA

Osaka, Japan 2019. DOX3D
Design by DOX & The Waku+Folk Partnership

Collaboration between DOX and The Waku+Folk Partnership for an office for HP in Osaka. DOX was responsible of the design and 3D work. The project was managed by JLL. The design is simple and elegant with a predomination of wood and punchy colors, according to the HP international design guidelines.



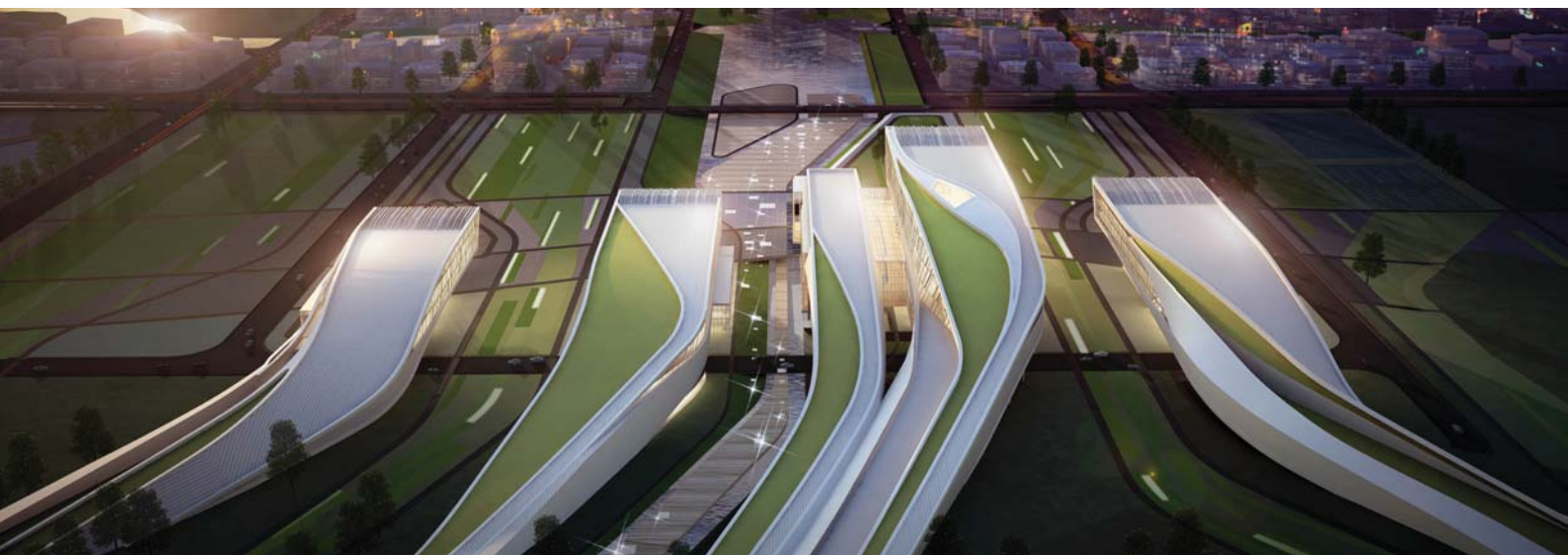
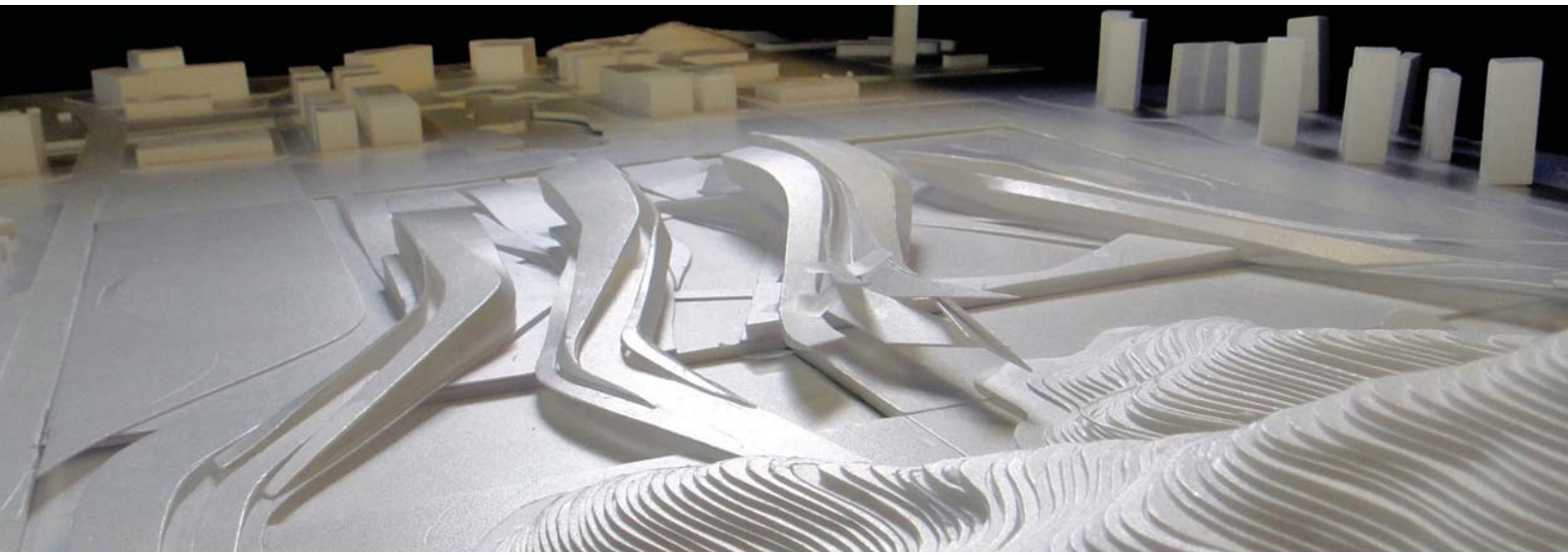
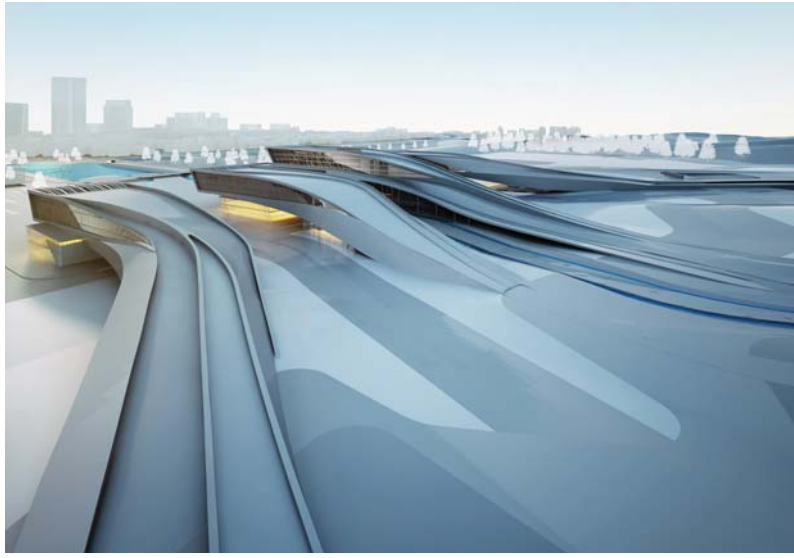
ARCHITECTURE

3D RENDERINGS

CITY HALL COMPETITION KOREA

**Gyeongsan Buk Do, South Korea 2010. DOX3D
Design by Ivan Pazos for DA Group**

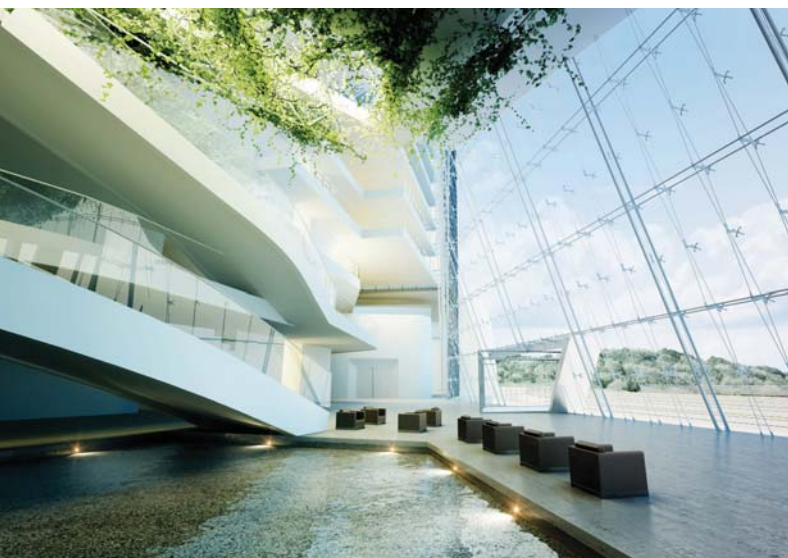
As South Korea continues its economic growth new planned cities are being developed in several locations. Gyeongsang Buk Do province it is one of these new Urban Developments. Ivan Pazos was the Senior designer with DA Group for the competition project. A fluid design that blends with the landscape.



KOGAS COMPETITION SEOUL

Daegu, Korea 2010. DOX3D
Design by Ivan Pazos for DA Group

Kogas, restricted competition for the main gas provider in Korea. Ivan Pazos was senior designer with the DA Group team. The project is located in the city of Daegu.



NAM KWAN MUSEUM CHEONGSONG

Cheong Song, Korea 2016. DOX3D / Design by DOX

Renovation of a former high school building into a museum for renowned Korean painter from CheonSong Nam Kwan. A Collaboration between DOX and Bossdesign.



LIBRARY MADRID

Madrid, Spain 2019. Finalist in Competition
DOX3D / Design by DOX & Almazan Keio University Lab

Finalist (Among the 10 top entries out of 160) for the design competition organized by the Madrid city government for a library building in Las Tablas. Project in Colaboration with Almazan Lab at Keio University, Tokyo.



NAN QIAO HOTEL SHANGHAI

Nan Qiao, Shanghai, China, 2018. DOX3D
Design by Ivan Pazos for Nihon Sekkei

Residential and hotel development in the outskirts of Shanghai. Ivan Pazos was the Senior Designer with the Nihon Sekkei team. The project features triangular faceted windows.

KCC GOLF VILAS

PHILIPPINES

Clark, Philippines 2018. DOX3D / Design by DOX

Luxury Vilas, annex to a golf course in the mountain resort town of Clark in the Philippines, on a Korean owned golf course. The vilas are simple and elegant with adjacent swimming pools.



POOL HOUSE

FLORIDA

Orlando, Florida 2019. DOX3D
Design by Alta NYC

Proposal by Alta NYC for a house in Florida. DOX collaborated with the Computer Graphics production.

MUSEUM

COMPETITION

SPAIN

Galicia, Spain 2011. DOX3D / Design by DOX

Competition Proposal for a Museum in the North Western Spain, by DOX. The project is composed by triangulated cubic volumes.



PORT MASTERPLAN YOKOHAMA

Yokohama, Japan 2018. DOX3D
Design by Ivan Pazos for Nihon Sekkei

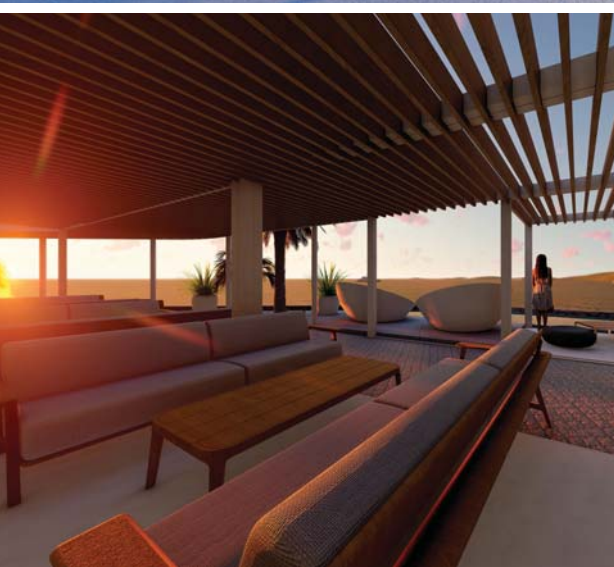
Ivan Pazos was senior designer, also did the 3D work for the re-development of the Yokohama port. The project includes an opera house, hotels, convention center, recreational, residential and a casino.



ITOSHIMA RESORT FUKUOKA

Itoshima, Fukuoka, Japan 2023. DOX3D / Design by DOX

Resort Dining in Fukuoka's West Coast by Digisurf. The project sits on a cliff overlooking the ocean over a small cozy beach. Ideal for food, drinks and private salt water spa. A perfect venue to relax and dine after a day on the seashore.



URBAN RESORT KIRANAH GARDEN TOKYO BAY

Toyosu, TOKYO, Japan 2022. DOX3D / Design by DOX

Urban Resort inn the heart of Tokyo Bay overlooking the megapolis skyline. Ibiza inspired trendy and exclusive venue, featuring both and indoor area, including a poolside. Time to get ready, the party is about to start!



BROOKLYN SCHOOL

BROOKLYN

Coney Island, New York, USA 2021. DOX3D
Design by Rizkalla Architects PLC

Renderings for a School in Brooklyn, NY. Project designed by Hany Rizkalla Architect, 3D renderings by DOX3D.



MUCCI'S

LONDON

Kings Road, Lodon, UK 2020. By DOX

Exclusive Italian dining in the heart of London, by Giuseppe Mucci. The restaurant gathers a high end and exclusive crowd. Great reviews, and always packed!



KABA NISEKO

Hokkaido, Japan 2022. DOX3D / Design by OCA

Project by HaCo in one of the most famous ski areas in the world, Niseko. The project is made of wooden houses overlooking mount Hirafu and the ski slopes. Renderings by DOX3D.



ADEAM



BEFORE

3D RENDERING

Adeam, Ginza Six, Tokyo



BEFORE

3D RENDERING

SK-II Pop-up Store, Omote-sando, Tokyo



BEFORE

3D RENDERING

Perrier-Jouet Lounge, at Paradise City Casino, Incheon, Korea

ADEAM



AFTER

REAL PICTURE

Adeam, Ginza Six, Tokyo



AFTER

REAL PICTURE

SK-II Pop-up Store, Omote-sando, Tokyo



AFTER

REAL PICTURE

Perrier-Jouet Lounge, at Paradise City Casino, Incheon, Korea



BEFORE
3D RENDERING
Muccis, London, UK



BEFORE
3D RENDERING
UPI STORE, Omote-sando, Tokyo



BEFORE
3D RENDERING
UPI STORE, Tokyo



AFTER
REAL PICTURE
Muccis, London, UK



AFTER
REAL PICTURE
UPI STORE, Omote-sando, Tokyo



AFTER
REAL PICTURE
UPI STORE, Tokyo



BEFORE

3D RENDERING
Foxey + Adeam, Ishetan, Tokyo



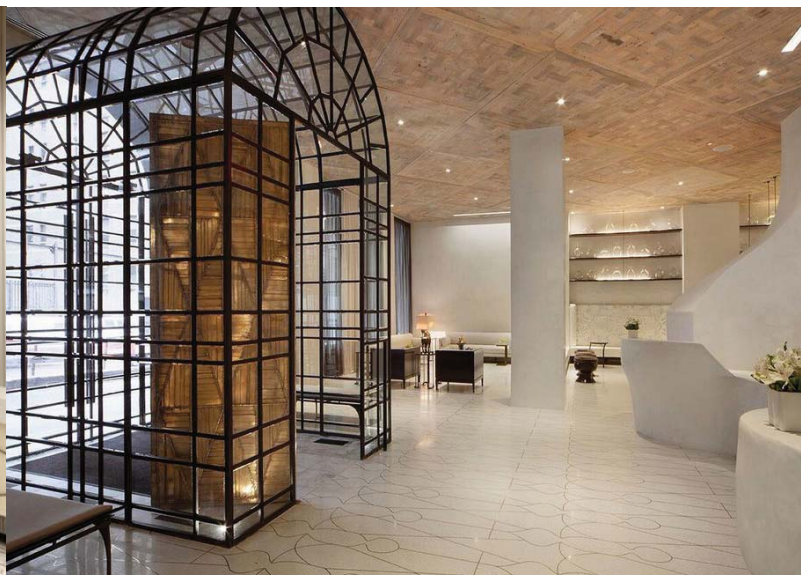
AFTER

REAL PICTURE
Foxey + Adeam, Ishetan, Tokyo



BEFORE

3D RENDERING
Marmara Park Avenue, NYC



AFTER

REAL PICTURE
Marmara Park Avenue, NYC



BEFORE

3D RENDERING
Marmara Park Avenue, NYC



AFTER

REAL PICTURE
Marmara Park Avenue, NYC



BEFORE
3D RENDERING
HP Office, Osaka



AFTER
REAL PICTURE
Foxwey + Ateam, Tokyo



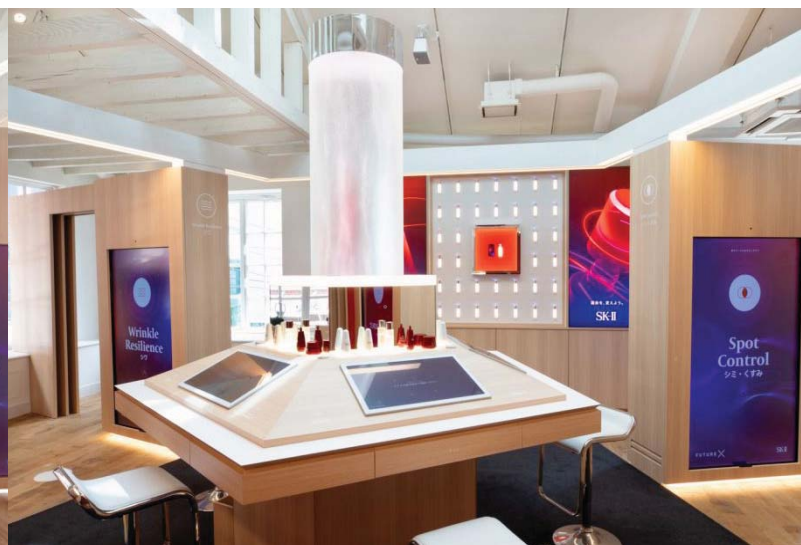
BEFORE
3D RENDERING
HP Office, Osaka



AFTER
REAL PICTURE
HP Office, Osaka



BEFORE
3D RENDERING
SK-II Pop-up Store, Omote-sando, Tokyo



AFTER
REAL PICTURE
HP Office, Osaka



DOX3D



DOX3D

NEW YORK TOKYO SEOUL
3D COMPUTER GRAPHICS

WWW.DOX3D.COM ip@DOX3D.COM +(81) 70 4079 5623